The background of the slide features a large, semi-transparent image of a white rectangular sign with a blue border. The sign contains the text 'ROUTE 113' in a large, blue, sans-serif font. The sign is positioned centrally and serves as a backdrop for the main text.

# Route 113 Corridor

*Prospects for a Scenic Byway*

**Presented by**  
**Southern Maine Regional Planning Commission &**  
**Greater Portland Council of Governments**

**June 14, 2006**  
**Baldwin Consolidated School**

# Scenic Byways in Maine

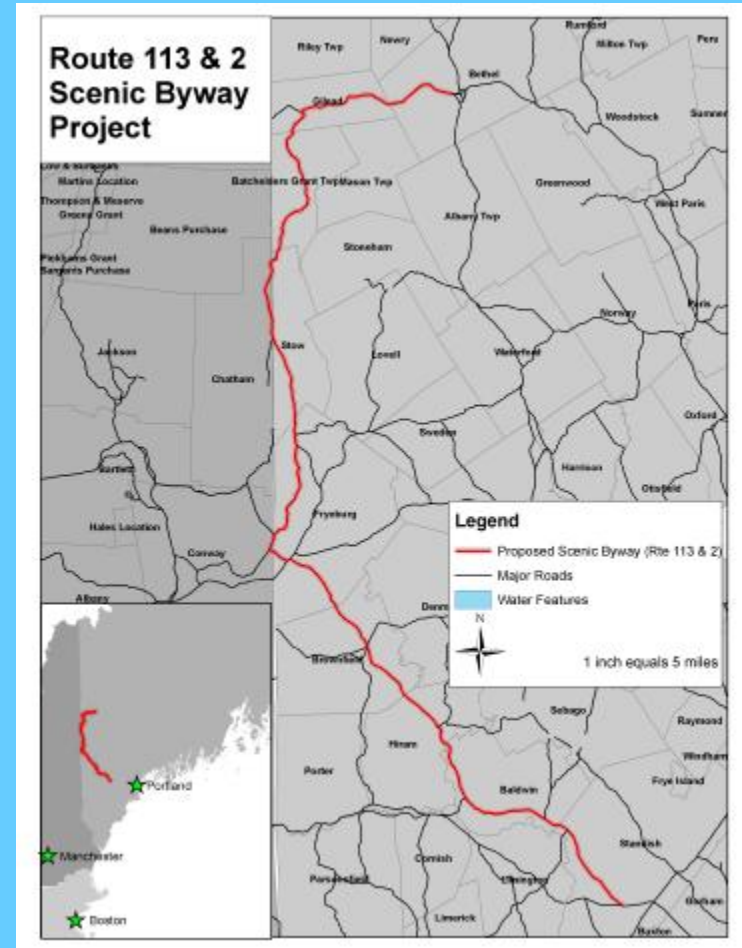


# What is a Scenic Byway?

- A roadway that is regarded by a group of communities as a special resource worthy of special recognition.
- A corridor management program developed, monitored, and implemented by and for communities
- Despite the name, a “scenic” byway doesn’t necessarily have to possess high scenic qualities. Beauty is only one of six possible criteria for scenic byway designation.

# Route 113 & 2 Scenic Byway Project

- Towns on Route 2 and 113 from Bethel to Gilead to Standish
- Regional Agencies Facilitating Eligibility Application
- Pre-screened by Maine DOT
- All 6 Intrinsic Qualities Evident

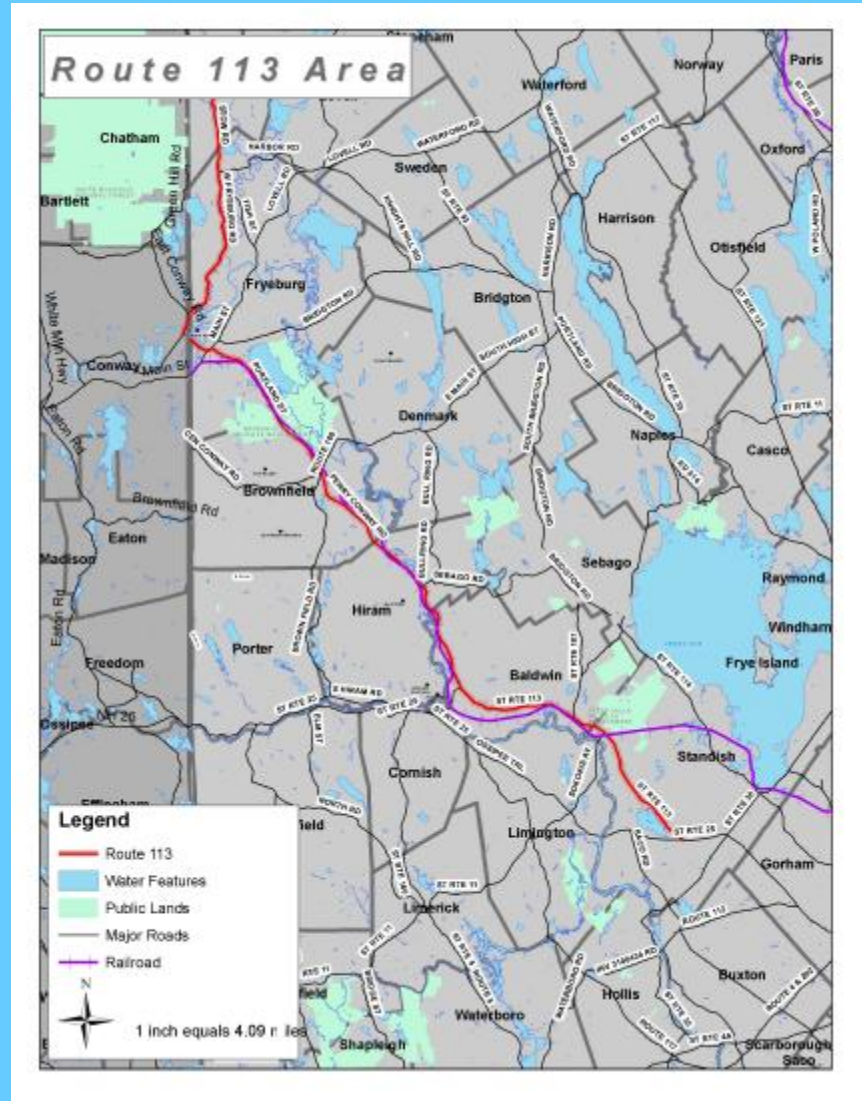


# The Six Intrinsic Qualities

- Scenic
- Natural
- Historic
- Cultural
- Archeological
- Recreational

# Let's Look at the Corridor

**30 Miles, 5 Towns**  
(Fryeburg, 4 mi; Brownfield, 6 mi; Hiram, 4 mi, Baldwin, 9 mi; Standish, 7 mi)  
**7 Villages**  
**Scenic Views of Several Mountains, Ponds, & Saco River**  
**Farms & Cultural/Historical Features**



# Scenic



# Natural



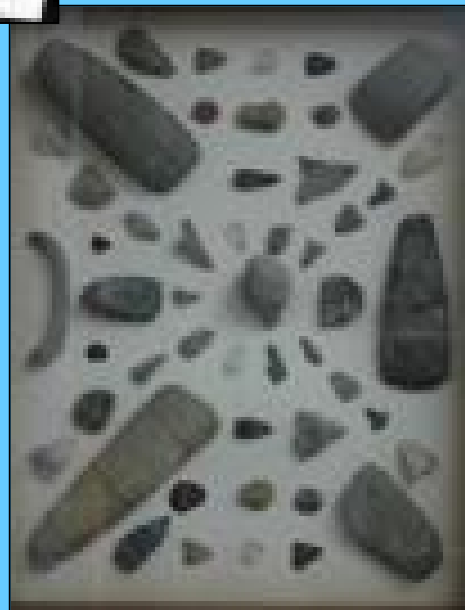
# Historic



# Cultural



# Archaeological



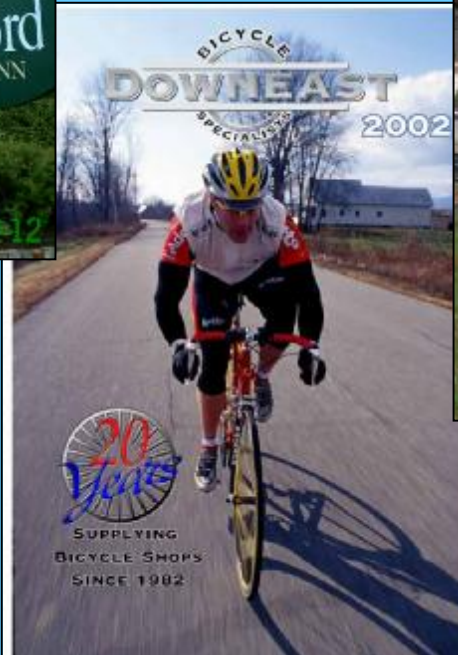
# Recreational



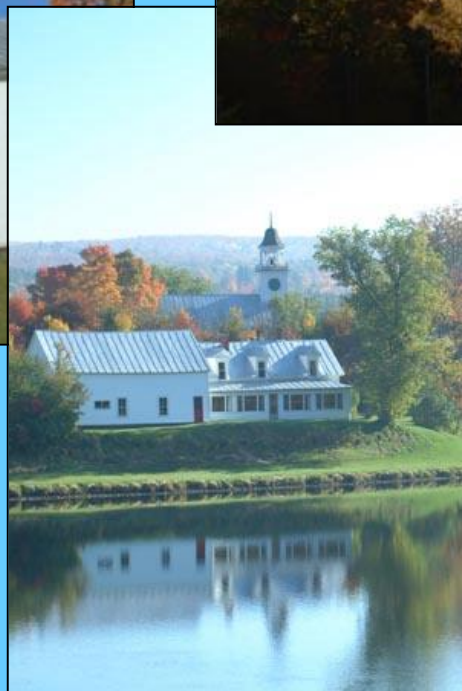
# Infrastructure



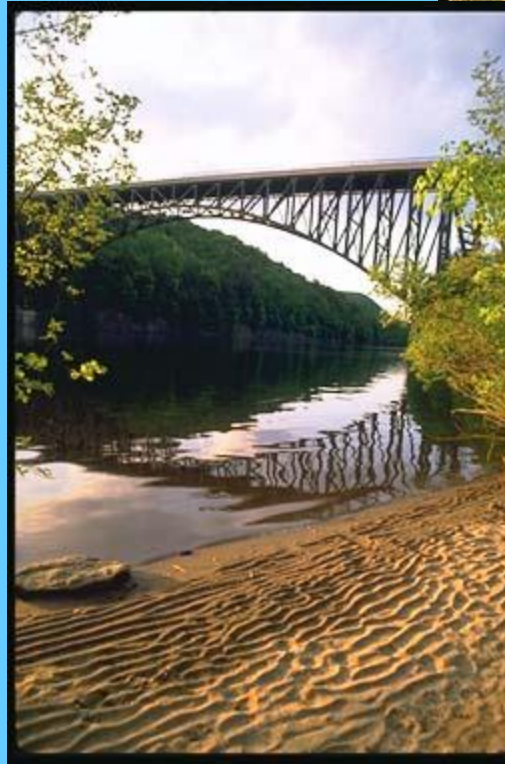
# Services



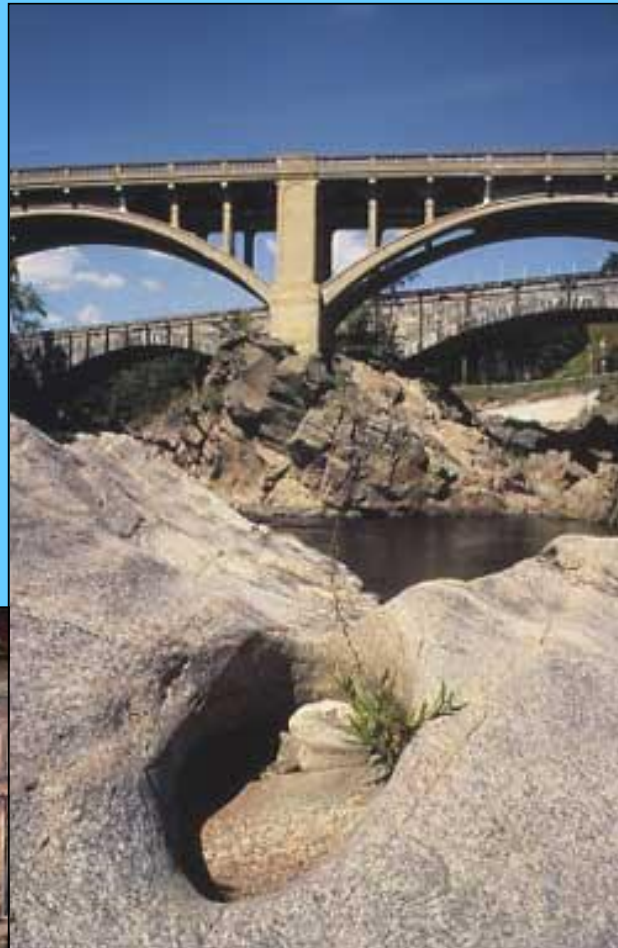
# U.S. Route 201 (Maine)



# Mohawk Trail – Route 2 (Massachusetts)



# Connecticut River Byway (VT-NH)



# Community Benefits

## Indirect Benefits

- Community Pride
- Community Vision
- Partnership Opportunities

# Community Benefits

## Direct Benefits

- Increase business, tax revenue, jobs
- Improved maintenance and infrastructure funding opportunities
- Funding opportunities from state and national offices of economic development and tourism
- Identification on state, federal and auto highway maps
- Protection of desired resource
- Access to resources and technical assistance

# Major Questions?

- Is this the **right fit** for the 113 corridor communities?
- Will a scenic byway impact property owners/town **land use control**?
- What kind of **grant money** has been available historically for scenic byways?  
For what kind of projects?

# Small Group Breakouts

1. Show us where you live.
2. What do you consider to be “the region?”
3. Why do you choose to live here?
4. What do you like best about your town?  
What do you like least?
5. What are the most important issues that towns in the corridor might work on together?