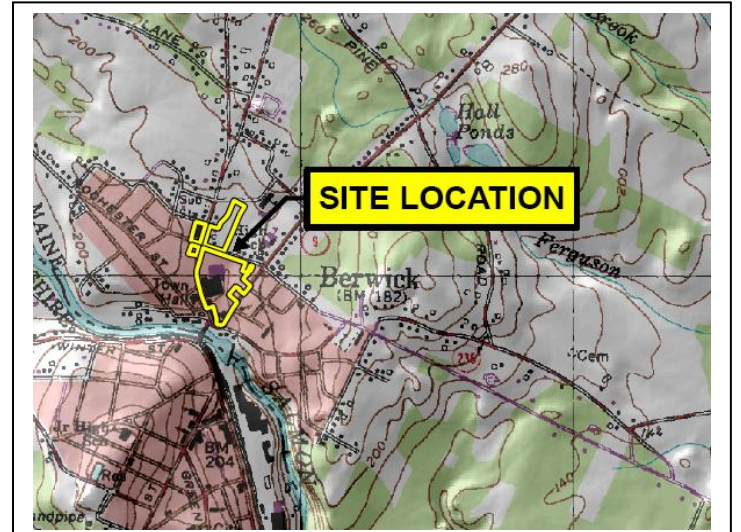


FORMER PRIME TANNING COMPANY

*20, 29, 34, and 35 Sullivan Street
Berwick, Maine 04047*

Site Overview:

Portions of this property have operated as a leather tannery, since prior to 1877. Other industrial operations performed on the property include a wool pulling works facility, a sash and door manufactory, a reed manufactory, a carriage manufactory, an oil company, a laundry facility, a shoe factory, and a lumber company. Prime Tanning vacated the site in 2008. The primary facility building was constructed in several stages and currently encompasses 248,800 square feet located on an 11.4 acre facility campus. The site is located in the downtown commercial district and is served by municipal water and sewer.



Redevelopment Options:

Due to the location of the property in the heart of downtown Berwick, the Town is considering a revitalization effort to develop a mixed-use commercial, residential, and cultural center. Redevelopment options may include commercial/retail facilities, residential, pedestrian walkways/trails connecting to other downtown improvements, and a pocket park or greenspace in order to create a vibrant and revitalized downtown village campus. Other redevelopment ideas are welcome.



Environmental Status:

Phase I and II Environmental Site Assessments (ESAs) and a Hazardous Building Materials Inventory (HMI) have been completed using EPA Brownfields funds under the Southern Maine Regional Planning Commission's (SMRPC) and the Maine Department of Environmental Protection (MEDEP) Brownfields Assessment Programs. Recognized Environmental Conditions and Areas of Concern have been identified.

Financial Incentives:

SMRPC, MEDEP, and Maine Department of Economic and Community Development (DECD) Cleanup Revolving Loan Funds (RLF) are available for site remediation and cleanup.



For More Information On This Property, Please Contact:

Chuck Morgan
SMRPC Economic and Community Development Director
cmorgan@smrpc.org
(207) 324-2952 Ext. 15
21 Bradeen Street, Suite 304, Springvale, Maine 04083

Keith Trefethen
Town Manager, Town of Berwick
townmanager@berwickmaine.org
(207) 698-1101 ext. 111
P.O. Box 696, Berwick, ME 03901

