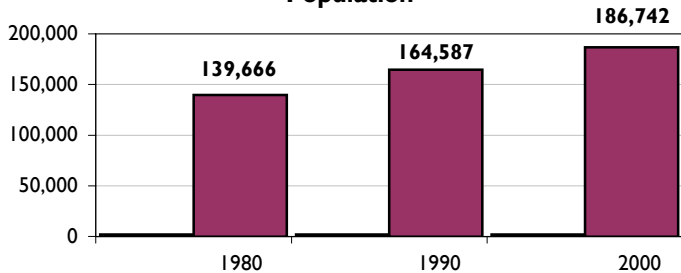


York County Demographics

Population

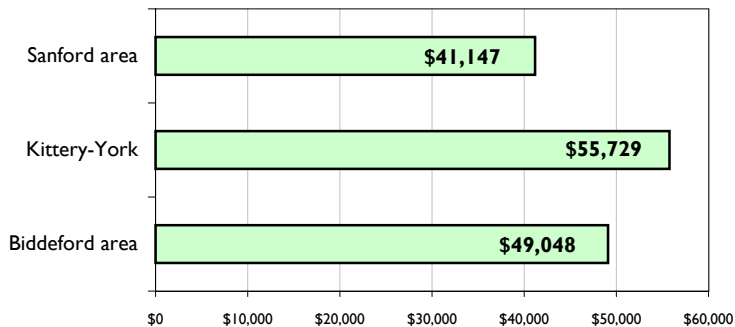


Median Age (2000)	38.5
Average local tax rate (2000)	13.53
Valuation (2002)	\$14,590,700,000

Education

High School Dropout Rate	3.14%
--------------------------	-------

Median Household Income (2002)



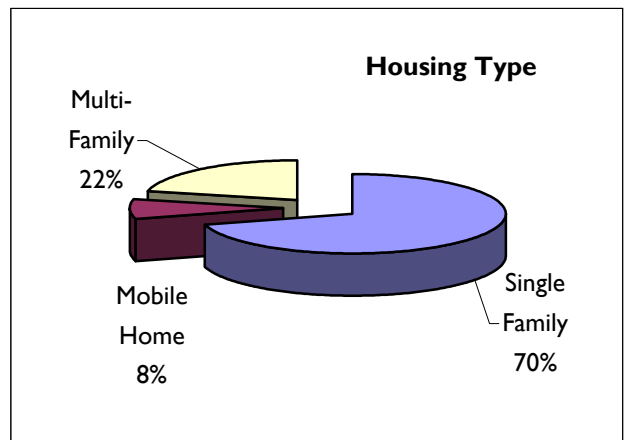
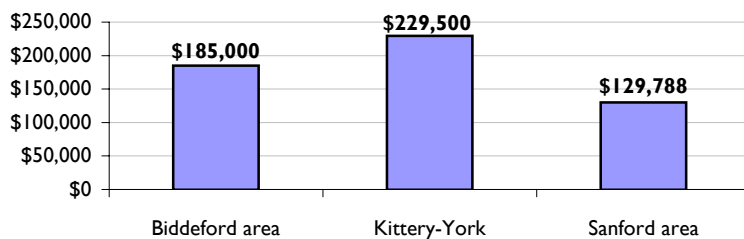
Higher Education	Enrollment
University of Maine, Saco	
University of Maine, Sanford	
University of New England, Biddeford	3,500-3,750
York County Technical College	475-500
% High School Graduates	87%
% College Graduate & Higher	23%

Housing

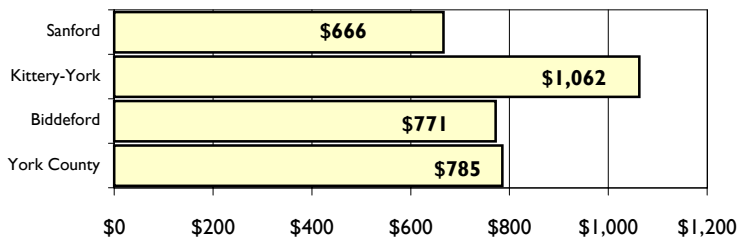
Housing Units (2000)	94,234
Building Permits (2001)	1,413

Average Household Size	2.47
% Owners	72.6%

Median Home Sales Price (2002)



Average Rent for 2-BR with Utilities (2001)



Rental Vacancy Rate	5.4%
% Renters	27.4%

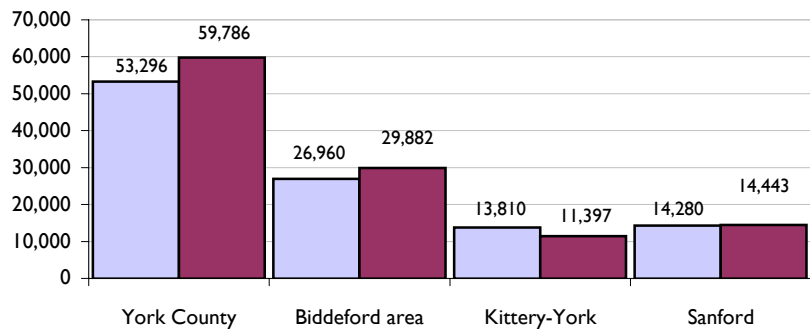
York County Economy

Labor Force (2002)	102,080		
Economic Clusters	Advanced Composites	Aircraft Manufacturing	Tourism
	Food Processing	Fabricated Metal	Electronics
	Leather Products	Shipbuilding	

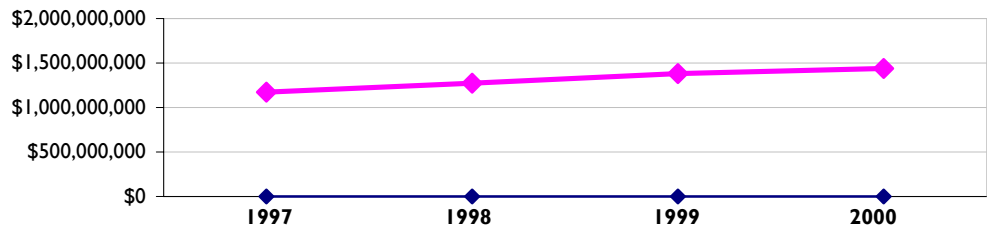
Commercial Space

- Airport Industrial Park, Biddeford
- Alfred Road Industrial Park, Biddeford
- Biddeford Industrial Park
- Exit 4 Business Park, Biddeford
- Portsmouth Naval Shipyard, Kittery
- Sanford Industrial Development Park
- Composites Technology Center, Sanford
- Sanford Millyard
- Saco Industrial Park
- Saco Plaza
- Wells Busines Park

Job Growth, 1997-2001



York District Consumer Retail Sales



Infrastructure

Utilities	Central Maine Power, Northern Utilities	
Telecommunications	Verizon, Time Warner, Oxford Networks	
Public Sewer	Berwick, Biddeford, Kennebunk, Kennenbunkport, Limerick, Ogunquit, Saco, Sanford, South Berwick, Wells, York	
Airports	Biddeford Municipal Airport, Sanford Municipal Airport	
Rail	Amtrak Downeaster with stops in Wells, Saco, Old Orchard Beach	
Ports & Terminals	Portsmouth Naval Shipyard	
Freight	Springfield Terminal Railway, Saco Industrial Track	
Bus	ZOOM	Biddeford-Saco-Portland
	Shuttlebus	Biddeford-Saco-Old Orchard Beach
	The WAVE	Sanford-Springvale-Wells
	My Bus	Sanford-Springvale
Regional Trail Systems	Eastern Trail	Kittery-South Portland
	Mountain Division Trail	Windham-Fryeburg via Limington, Cornish
Health Care	Henrietta D. Goodall Hospital	Sanford
	Southern Maine Medical Center	Biddeford
	York Hospital	York

Jobs

Largest Non-Municipal Employers (SIC code)

Over 1,000 Employees

Portsmouth Naval Shipyard (3731)
Pratt & Whitney (3724)

500-999 Employees

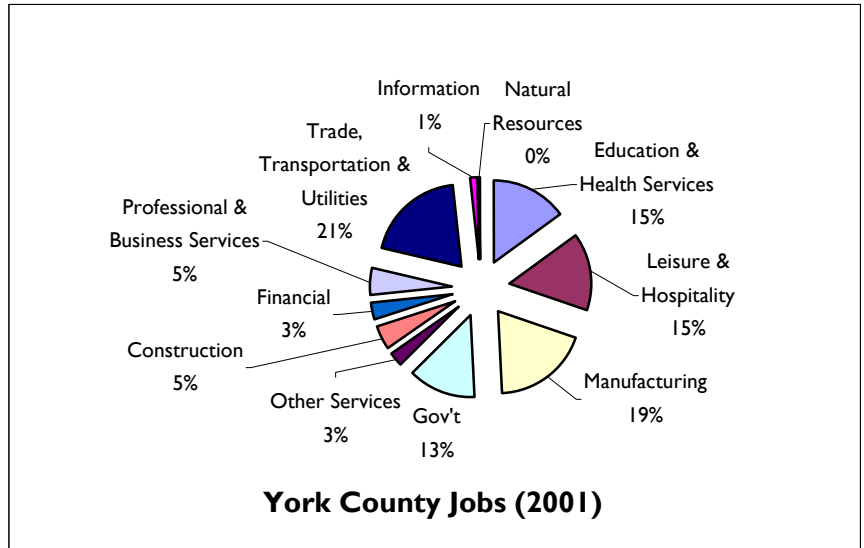
Sweetser (8361)
Southern Maine Medical Center (8062)
Spencer Press (2752)
Interstate Brands Corp. (2051)
York Hospital (8062)
University of New England (8221)
Goodall Hospital (8062)

250-499 Employees

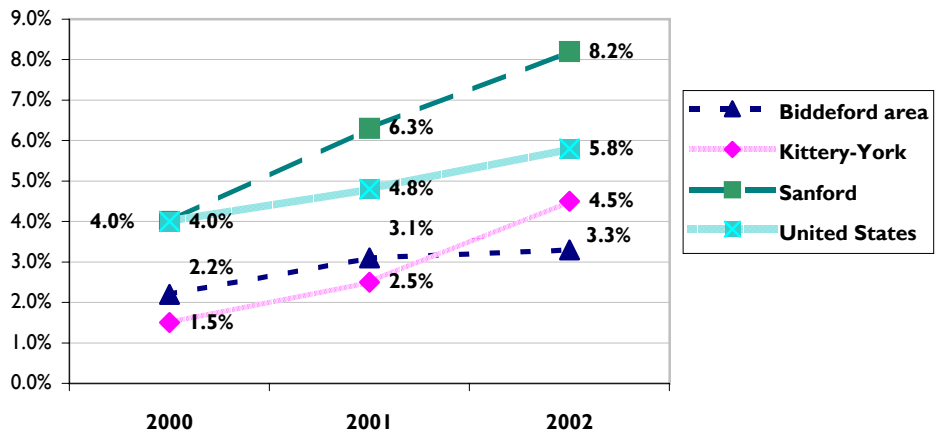
Weathervane Seafoods (5812)
William Arthur, Inc. (2678)
Hussey Seating Co. (2531)
Community Partners Inc. (8361)
Westpoint Stevens Inc. (2392)
Funtown Splashtown USA (7996)
Cyro Industries (3081)
Shaws -Wells Distribution Ctr (5411)
Kittery Trading Post (5941)
Corning Incorporated (3089)
GH Bass & Co. (5651)
Prime Tanning Co. Inc. (3111)

100-249 Employees

Visiting Nurse Service (8082)
Wal-Mart (5311)
General Dynamics-Saco Defense (3484)
Counseling Services (8093)
Camp Waban (8322)
Sanford Precast (3272)
Biddeford Textile Corp. (2221)
Primecare Physician Associates (8011)
Wood Structures Inc. (2439)
The Goldenrod (2064)
Sprague Sanford (3675)
U.S. Post Office (4311)
Hannaford Brothers (5411)
JHM Enterprises-McDonalds (5812)



Unemployment Rate



York County Annual Wages (2001)

